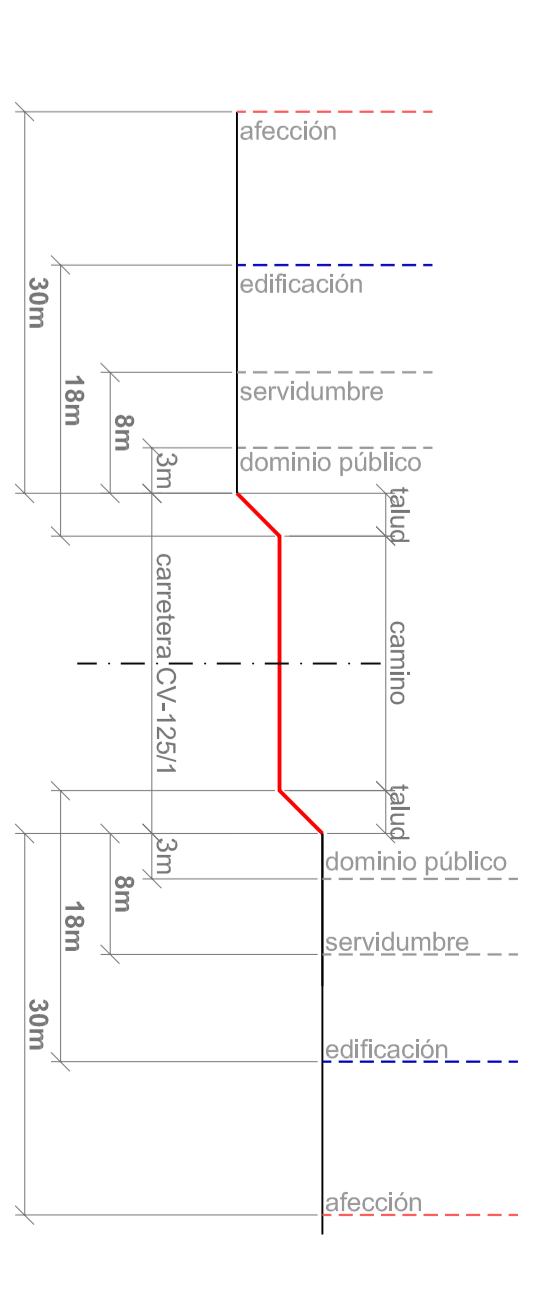
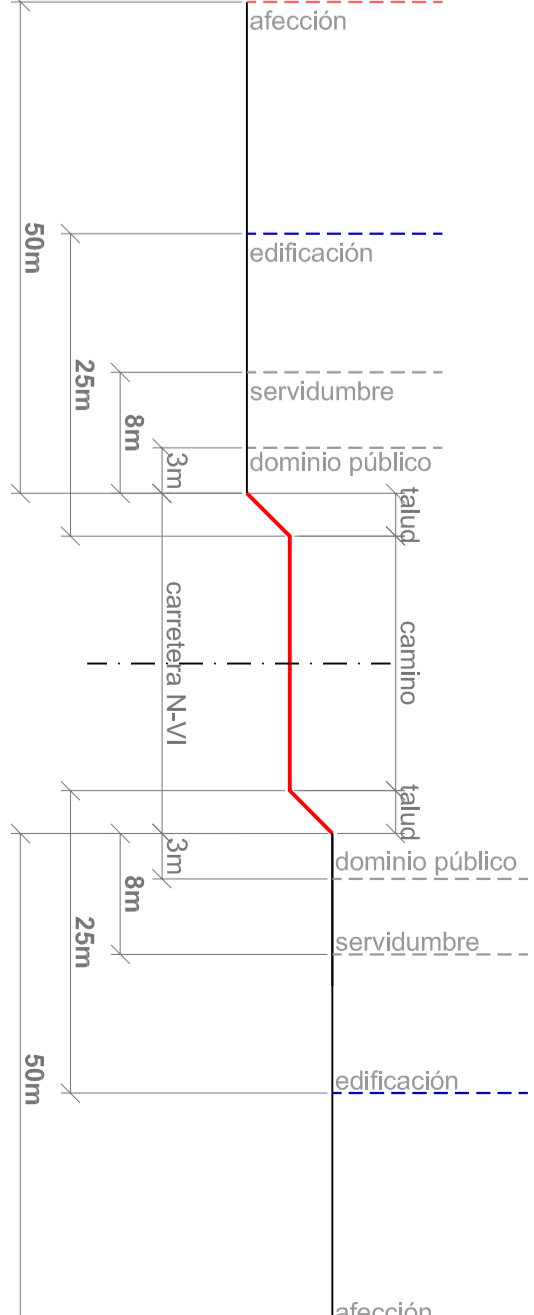
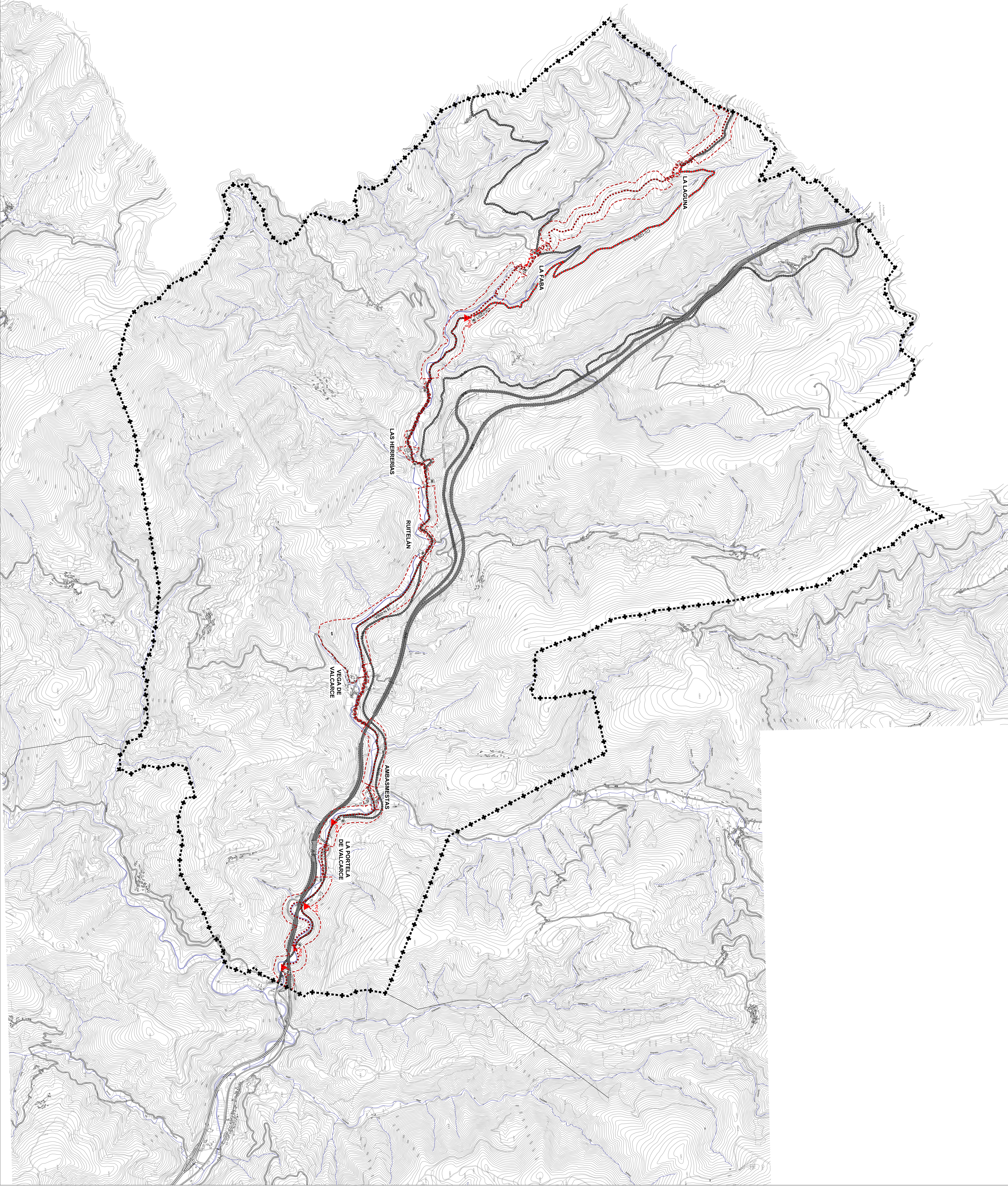


PUNTO CONFLICTIVO	
PC-1	CARRETERA N-VI, KM 417,070 (80 M)
PC-2	CARRETERA N-VI, KM 417,400
PC-3	CARRETERA N-VI, KM 418,080 (400 M)
PC-4	CARRETERA N-VI, KM 419 (500 M)
PC-5	CARRETERA N-006 A, KM 424,700 (300 M)
PC-6	CARRETERA N-006 A, KM 425,500 (800 M)
PC-7	CARRETERA N-006 A, KM 427 (1500 M)
PC-8	CARRETERA CV-125/1 SALIDA LAS HERREÑAS (170 M)
PC-9	CARRETERA CV-125/1 SALIDA BARRIO DE HOSPITAL (1100 M)



1.1-01

1.1-01